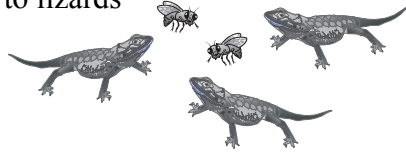


5.1

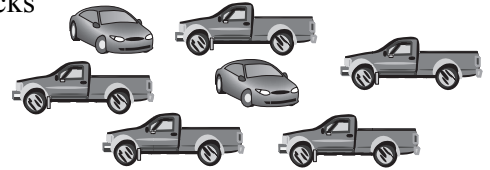
Practice A

Write the ratio in two ways. Explain what the ratio means.

1. flies to lizards



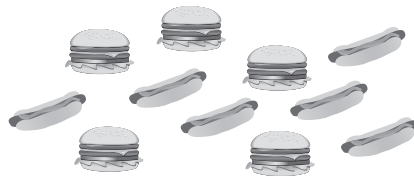
2. cars : trucks



3. notebooks : pencils



4. hamburgers to hot dogs



Use the table to write the ratio. Explain what the ratio means.

5. tubas : flutes

6. trumpets : tubas

7. flutes : tubas

8. trumpets : flutes

Instrument	Number
Tubas	2
Flutes	5
Trumpets	3

You and a friend make a total of 45 bird houses. Use the tape diagram to find how many bird houses you make.

9. You: Friend:

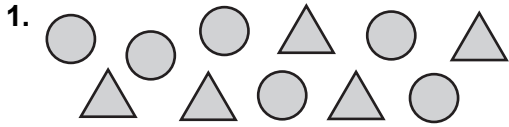
10. You: Friend:

11. There are 3 buses to carry 96 students on a field trip. Write the ratio of buses to students.
12. There are 18 pieces of chalk. The ratio of chalk that is yellow to chalk that is not yellow is 1 : 2. How many pieces of chalk are yellow?
13. The ratio of students to teachers at a school is 19 : 1. How many students are there in each total number of people?
 - a. 100 people
 - b. 280 people
 - c. 440 people
 - d. 760 people
14. You spend 90 minutes practicing flip tricks and slides on your skate board. The ratio of time spent on flip tricks to time spent on slides is 7 : 8. How much time do you spend practicing slides?

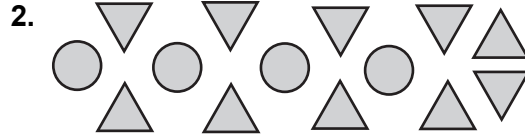
5.1

Practice B

Write the ratio. Explain what the ratio means.

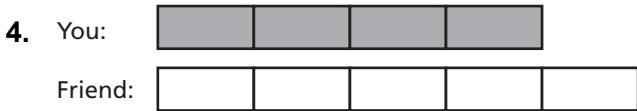


circles to triangles



triangles to circles

You and a friend tutor a total of 18 hours. Use the tape diagram to find how many hours you tutor.



5. In a recipe, the ratio of fluid ounces of water to fluid ounces of tomato paste is 3 : 4. You plan to make 35 fluid ounces of sauce. How many fluid ounces of tomato paste do you need?
6. A middle school band has 45 sixth and seventh graders. The ratio of sixth graders to seventh graders is 2 to 3. How many sixth graders are in the band? Explain how you got your answer.
7. The ratio of the ages (in years) of three children is 2 : 4 : 5. The sum of their ages is 33. What is the age of each child?
8. You make a necklace using blue, purple, and green beads in a ratio of 1 : 1 : 2. You use a total of 168 beads. How many green beads are in the necklace?
9. A caterer makes 3 extra sandwiches for every 20 sandwiches a customer orders.
 - a. Write the ratio of ordered sandwiches to extra sandwiches.
 - b. The caterer makes a total of 184 sandwiches for a customer. How many sandwiches did the customer order?